



# VIDEOTREE

LUXURY WATERPROOF TELEVISIONS MADE IN ENGLAND

IN-WALL RANGE: 19" / 27" / 32" / 42" / 46" / 55"

QUICK INSTALL &  
SETUP GUIDE

LIFESTYLE RANGE



Quick installation guide for Videotree's in-wall range of waterproof televisions.

This guide is provided as an overview of the installation procedure. Please refer to your user manual for full installation instructions.



**WARNING:**  
If you are unsure about the installation of your television STOP IMMEDIATELY and contact a professional. Incorrect installation could result in bodily injury or damage to the television.

This guide is provided as a simple overview of the installation process. Please refer to the full User Manual for complete installation and setup instructions. If you are unsure about the installation of your television STOP IMMEDIATELY and contact a professional. Incorrect installation could result in bodily injury or damage to the television.

**WARNING:**  
When removing your television from the packaging, ensure that you are able to lift the television safely. We recommend that 2 persons are present to lift and move the larger televisions.

When lifting your television, face the screen away from your body and hold the top and the bottom of the frame securely. Do NOT hold the screen or place excessive pressure on the screen.

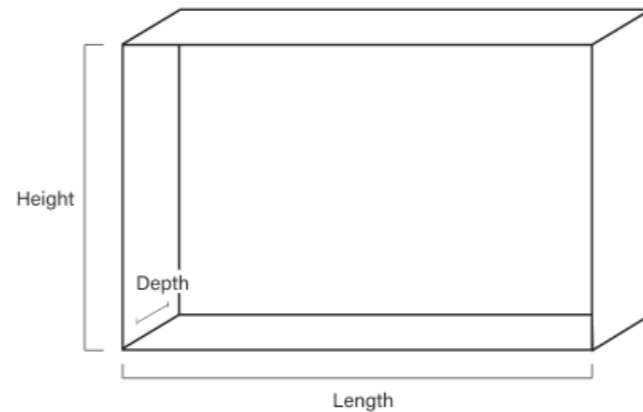
**NOTE:**  
Before installing your television, we recommend that you connect the television to a power source and ensure that it is working correctly.

IN-WALL CUT OUT DIMENSIONS

Use the dimensions and diagram below to understand the cut-out dimensions required for installation.

TELEVISION SCREEN SIZE						
KEY*	19"	27"	32"	42"	46"	55"
Length	451	634	742	981	1067	1261
Height	280	384	447	584	632	742
Depth	41	41	61	61	61	61

\*Measurements are in millimetres (mm) unless otherwise stated.



**STEP 1**  
Determine the best position for the television screen, taking into account viewing angles (see page 12), lighting and cable or electrical connections.



**STEP 2**  
Using the dimensions on pages 13-15, measure and create your in-wall cutout ensuring the edges are straight and level.



**STEP 3**  
Install the cables and power supply needed for the television and ensure there is enough length to reach the connectors. Tidy any excess length away to tidy the area (power supply, HDMI, aerial cable etc).

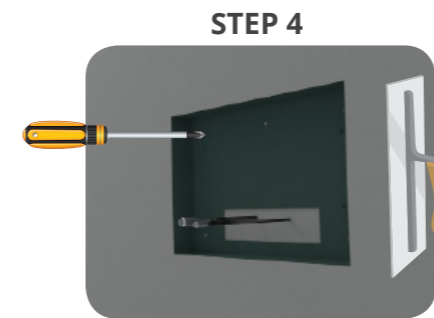
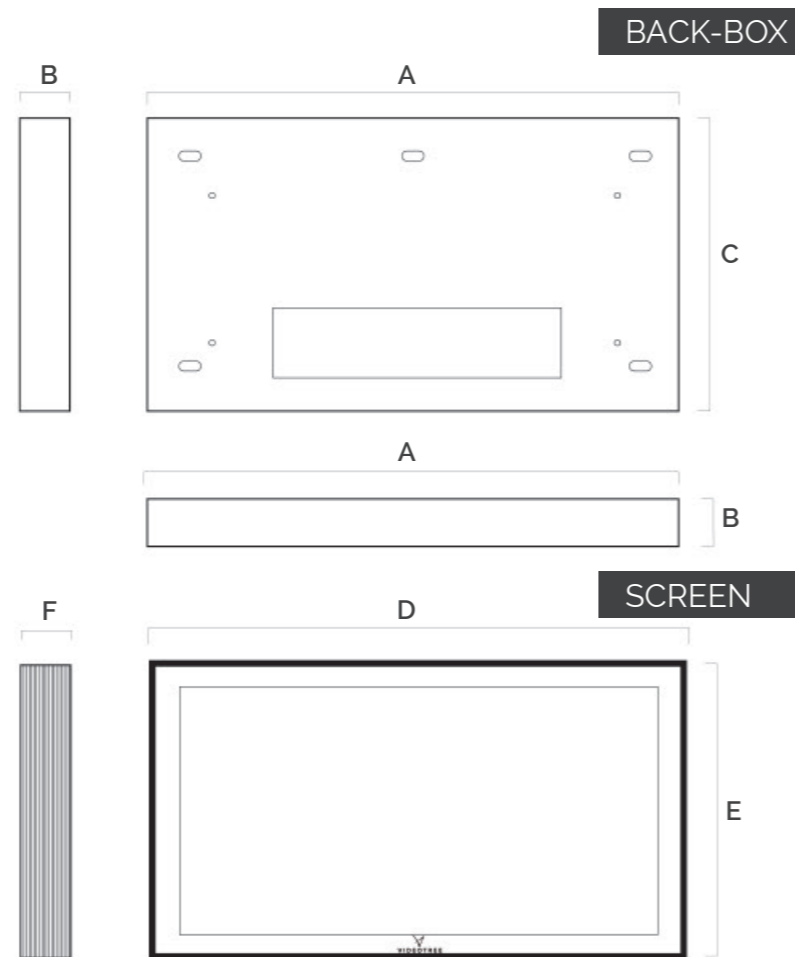
TELEVISION & BACKBOX DIMENSIONS

Use the dimensions below and diagrams opposite to understand the size of your television and backbox.

TELEVISION SCREEN SIZE						
KEY*	19"	27"	32"	42"	46"	55"
A	450	633	741	980	1066	1260
B	50	50	60	60	60	60
C	279	383	446	584	632	741
D	456	639	747	986	1073	1266
E	285	389	452	589	637	747
F	35	35	60	60	60	60

PACKAGING DIMENSIONS						
Length	553	735	820	1200	1250	1500
Depth	180	180	100	100	100	200
Height	497	550	520	650	700	1200
Weight (kg)	11kg	16kg	22kg	29kg	35kg	40kg

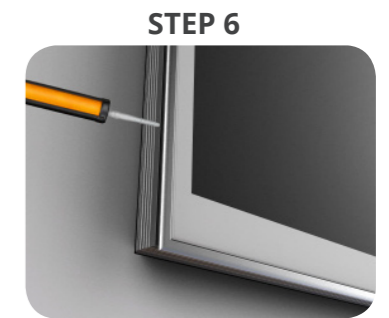
\*Measurements are in millimetres (mm) unless otherwise stated.



**STEP 4**  
Slide the backbox into the cutout and fix into place with enough fittings to secure it. Ensure the box fits tight into the cutout and fill in any gaps around the edge of the backbox using a filler.



**STEP 5**  
Connect your television to the power supply and cable connections, slide into the backbox and turn the power on. Ensure your television is working correctly and is level before applying the final seal. We recommend that you do NOT remove the plastic screen protector until installation is completed.



**STEP 6**  
Once you are certain the television is working correctly, all the connections are installed and the screen is level, seal between the edge of the television and the wall with a waterproof silicon sealant. Ensure that any gaps are completely sealed to prevent ingress of water and dust.

**WARNING:**  
Ensure the cables are long enough to reach your television and any power outlets or external devices.

Ensure the mains supply socket is switched off before connecting your television power supply.

We recommend using at least two persons to lift the television.

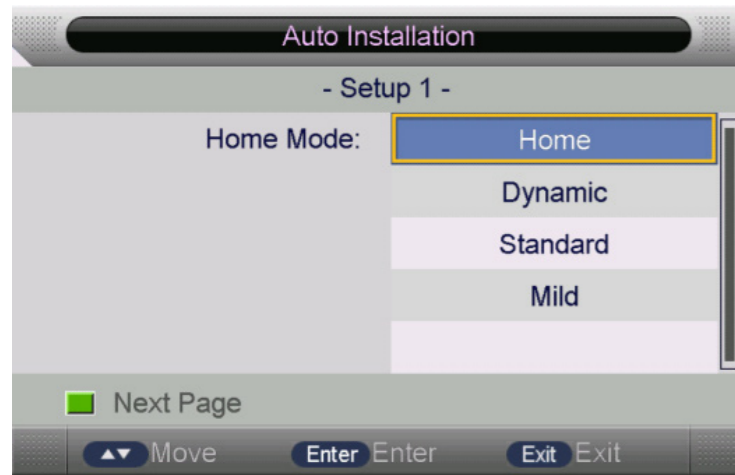
The rear of the television is NOT water resistant. Do NOT expose the rear of the television to water. If you do not correctly seal any gaps between the television and the wall, your television could become exposed to moisture or dust and your warranty will be voided.



Your brand new television is ready to enjoy!

If this is the first time you are turning on the TV and there are no programs in the TV memory, the "Auto Installation" menu will appear on the screen. Using the MASTER remote control, follow the 5 setup steps as below:

**Setup 1: Set up Home**



**Setup 2: Select the Country**



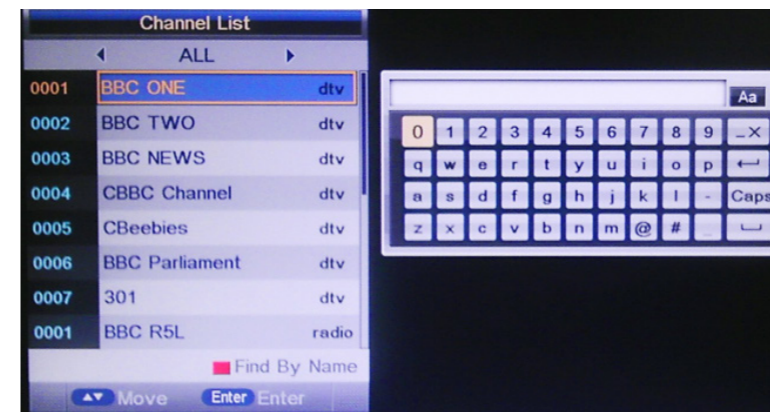
**Setup 6.1: Set up the Satellite**



**Options In Menu:**

OPTION	VALUE
Load Default Database / Database Import	Import default Satellite database
Satellite System	Enter "Satellite System" menu for settings

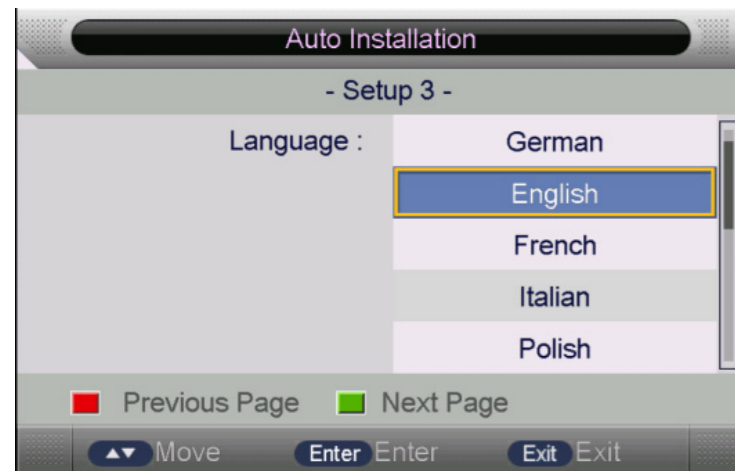
**Setup 7: Channel List Menu**



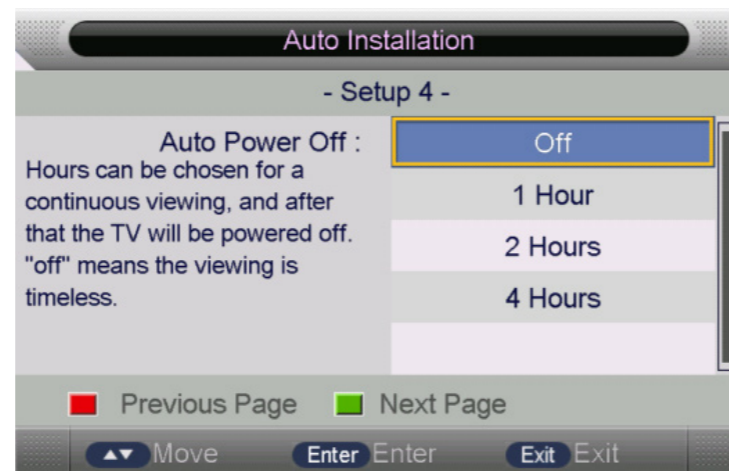
**Key Stroke In Menu:**

KEY STROKE	ACTION
KEY_UP	Focus on the previous item/program
KEY_DOWN	Focus on the next item/program
KEY_MENU	Exit Menu
KEY_CHANNEL_LIST	Exit Menu
KEY_RED	Show "Find" Mode Menu

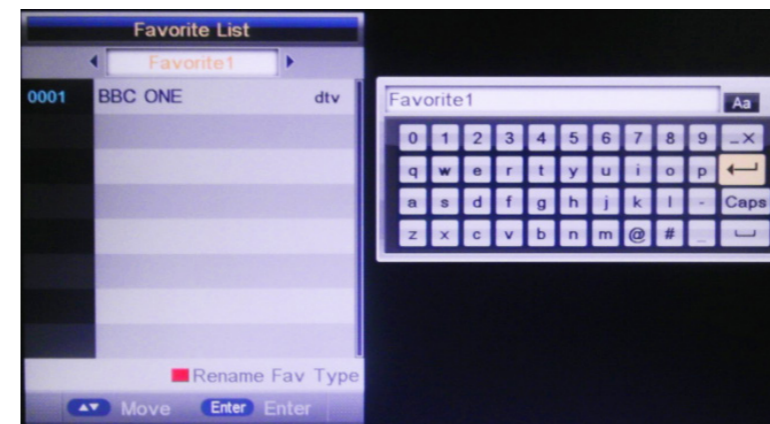
**Setup 3: Select the Language**



**Setup 4: Select "Auto-Power Off"**



**Setup 8: Favourite Menu**



**Key Stroke In Menu:**

KEY STROKE	ACTION
KEY_UP	Focus on the previous item/program
KEY_DOWN	Focus on the next item/program
KEY_MENU	Exit Menu
KEY_FAV_LIST	Exit Menu
KEY_RED	Show "Rename Favourite List Name" Menu

**Setup 5: Select the TV Connection**



**Setup 6: Select the "Auto-Search" (air/cable type)**



The 'Speaker Out' port can be found on the left of the control panel on the rear of the television.

Two external speakers (left and right) can be connected to this port using standard red and black speaker cables (not provided).

**Cable Connections:**

**Red** = Positive +ve

**Black /Red & Black** = Negative -ve

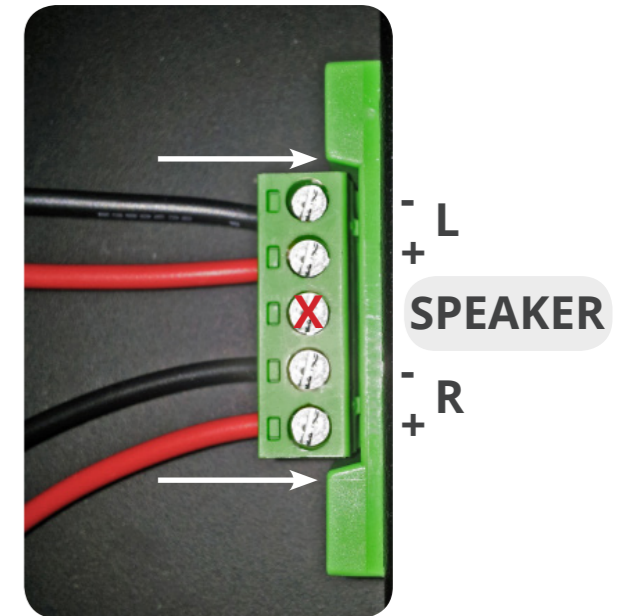
**NOTE:**  
External speakers and speaker cables are NOT supplied with your television.



**STEP 2**

CONNECT SOCKET TO THE TV

Plug the green socket (with wires now attached) back into the main control panel. This should simply 'snap' back into place.



**STEP 1**

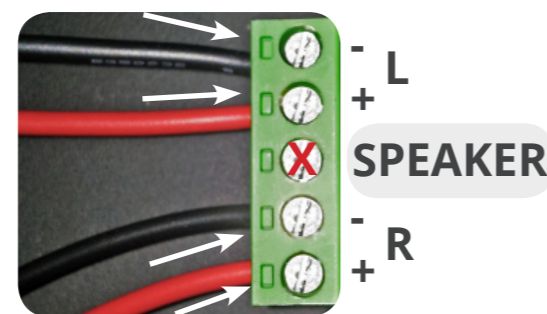
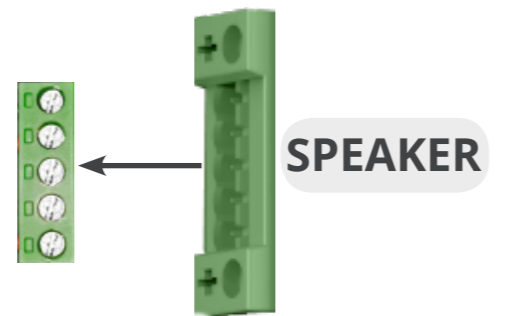
CONNECT TO THE TV SOCKET

Unplug the green speaker socket from the main control panel.

Unscrew the required connection sockets on the back of the television and place the cable connections into the correct sockets as shown in the image.

Do NOT use the central socket.

Screw the screws back into position so that they firmly hold the cable connections. Do not place excessive force onto the screws.

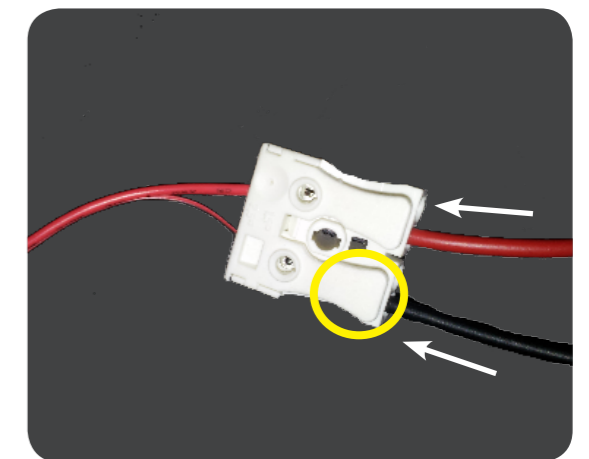


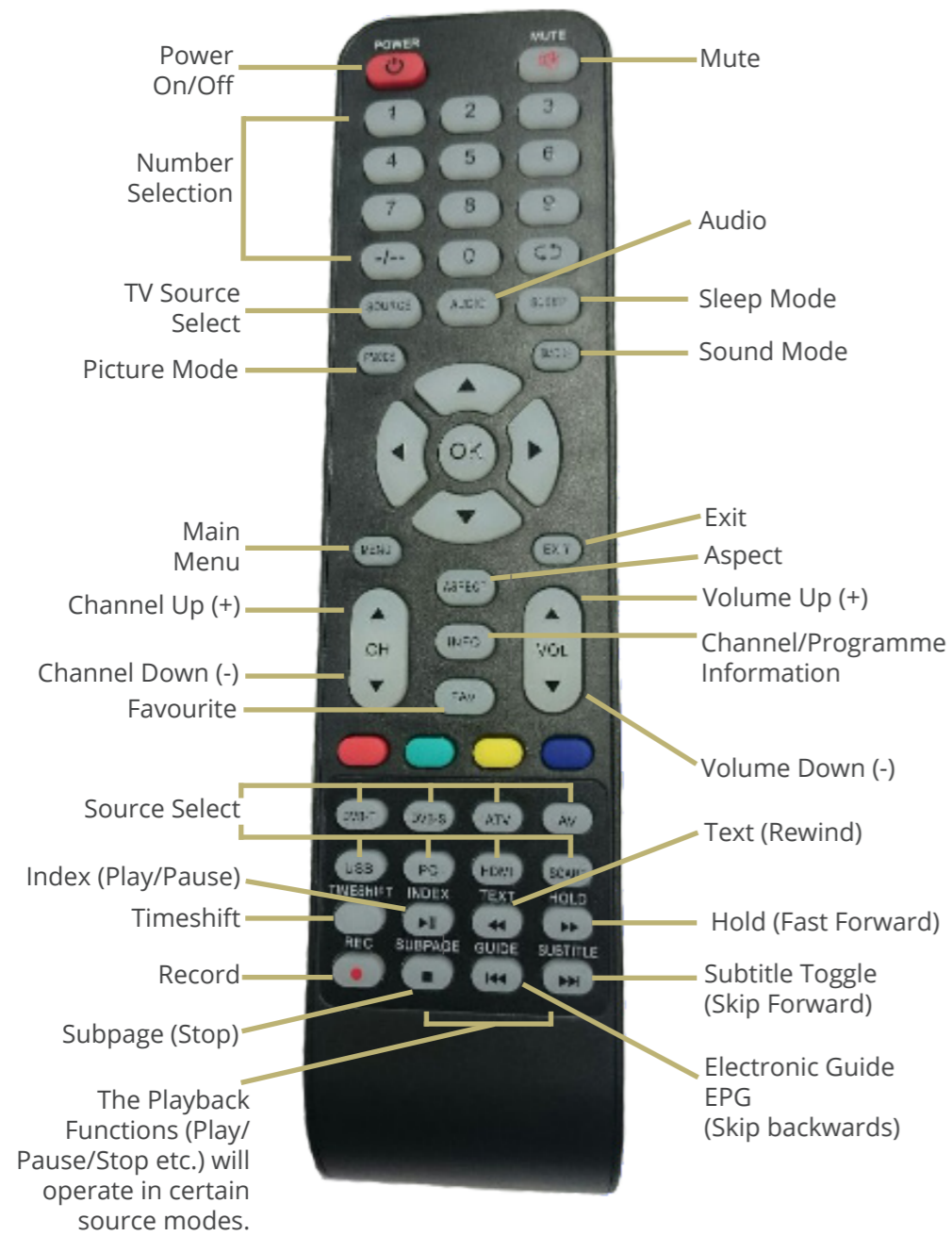
**STEP 3**

CONNECTION TO SPEAKER

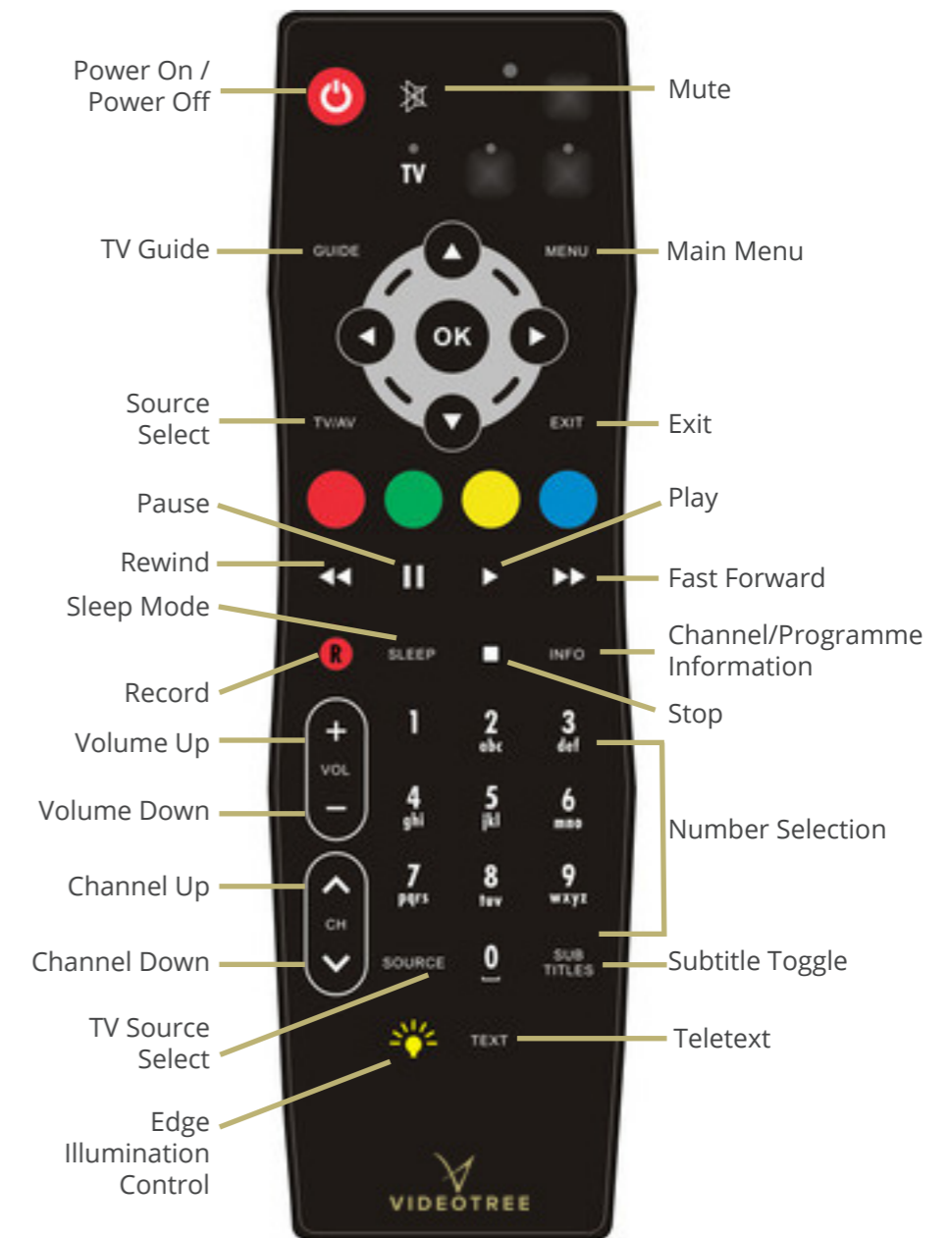
Connect the speaker cables to the external speakers by connecting them to the socket.

The image shown is the connection to Videotree's External Ceiling Speakers. Lift or press the plastic levers to open or close the sockets to insert the cable connections from the television.





PLEASE NOTE: The Master Remote Control is NOT waterproof. Do NOT get wet or submerge under water.



PLEASE NOTE: The Learning Remote Control is splashproof ONLY. Do NOT get wet or submerge under water.

**Power ON/OFF & Standby Function:**

Press the RED "POWER" button to turn the TV ON & OFF. When your TV is ON press the "POWER" button to enter standby mode. When your TV is in Standby Mode, press the "POWER" button to start it.

**Channel Switching:**

In the TV or DTV (Air) source, you can switch the channel by pressing either "CH▲" or "CH▼" button.

**Volume Adjust:**

Adjust the volume by pressing either "VOL▲" or "VOL▼" buttons. A volume adjusting level will appear on the screen displaying the current volume.

**Mute Function:**

To mute the sound, simply press the "MUTE" button. To unmute the sound, press the "MUTE" button once more.

**To Access the Electronic Programme Guide (EPG):**

Press the "GUIDE" button and the EPG will appear on the screen. Use the "▲" and "▼" buttons to navigate through the channels and the "◀" and "▶" buttons the view the different programmes for each channel. Press the central "OK" button to select a current programme or to set a reminder for a future programme. To exit the EPG, simply press the "GUIDE" button once more.

**Sleep Function:**

When your TV is ON, press the "SLEEP" button to start the "Sleep" function which will automatically turn the TV OFF after a certain period of time. Continue to press the "SLEEP" button to select a certain time period or turn the function OFF.

**Switching the Input Source:**

After the normal start-up process, press the "Source" button, then either "Up" or "Down" button to choose the preferred source, then press either the "OK" or ">" button to finish.

**Info Function:**

To find the current Source press the "Info" button to view the Source and additional information such as: Channel Number / Colour System / Sound System (in the TV source) / Current Frequency / Bandwidth / Event Information / etc. (in the DTV (Air) source).

**Set up Picture Mode:** Select MENU then choose Picture

Pressing the "PMODE" button will change the parameters of the displayed picture such as:

Luminance / Contrast / Sharpness / Hue / Colour etc.

This function can also be found in the Main Menu.

**Set up Sound Mode:** Select MENU then choose Sound

Pressing the "SMODE" button will change the parameters of the sound such as:

Balance / Maximum Volume / Minimum Volume etc.

This function can also be found in the Main Menu

If you have any questions regarding the installation or set-up of your in-wall television, please contact Videotree via the details opposite.

The contents of this guide are subject to changes at anytime.  
Please refer to your instruction manual or contact Videotree for more information.



**VIDEOTREE**

Unit 1 Ember Centre  
Hersham Trading Estate  
Lyon Road  
Walton-On-Thames  
Surrey, KT12 3PU  
United Kingdom

Tel: 01932 267 797 (Mon-Fri, 9am-5pm)

Overseas: +44 (0)1932 267 797

Fax: 01932 251 206

Email: sales@videotree.com

Web: www.videotree.com